

TAKEDINORUM - VÍDEO 4.4

Teketuku - Bossa Nova

Tipo de vídeo: SECUENCIA

Música: Ritmo Bossa Nova. Benito, a partir de diversas fuentes.

Sílabas takedinorum:

te = palma derecha en pecho; tu (m) = pie derecho
ke = palma izquierda en pecho; ku (m) = pie izquierdo

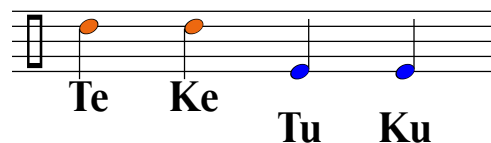
Contenidos: Una sola secuencia de 1 compás en semicorcheas.

Aprendizaje por acumulación de elementos.

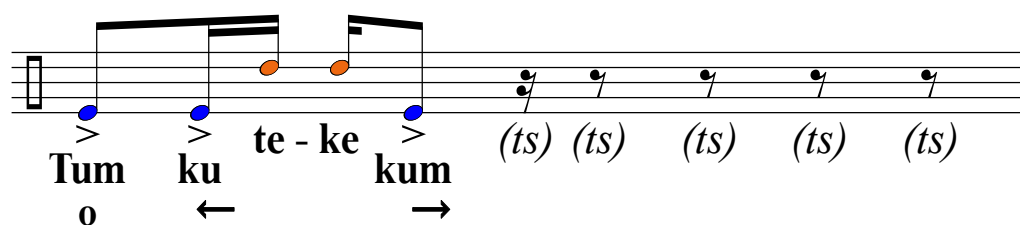
Movimientos de pies / → / ← / o /

Cada fragmento se muestra unos segundos y se repite 8 veces.

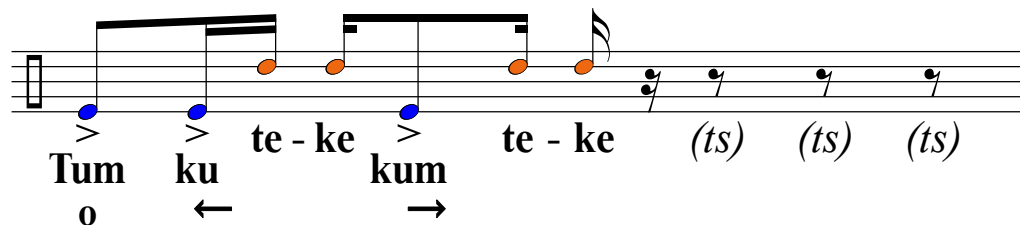
2 timbres: agudo (pies, depende del zapato), grave (pecho)



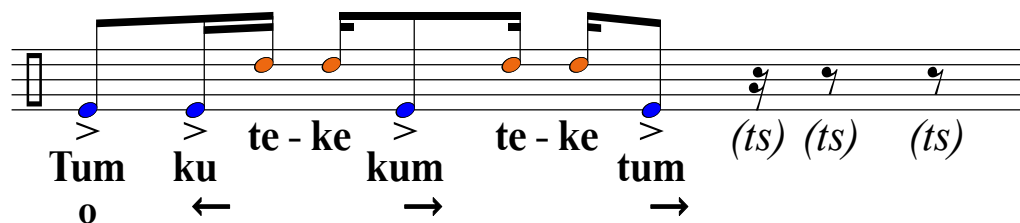
Paso 1



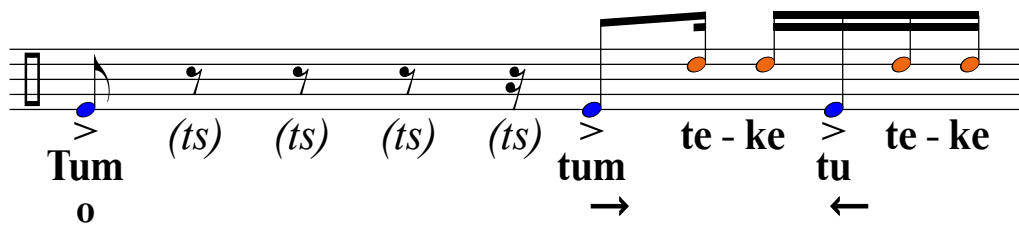
Paso 2



Paso 3

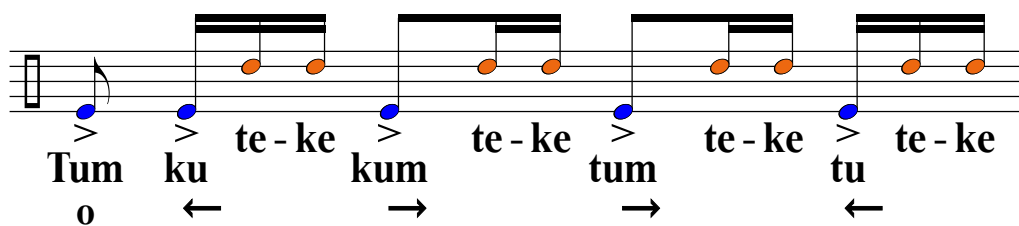


Paso 4



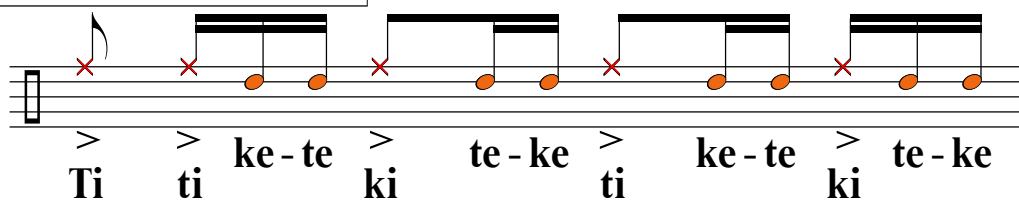
Musical notation for Paso 4. The staff shows a sequence of notes: a quarter note G4 with an accent (>) and a fermata, followed by four eighth notes G4, A4, B4, and C5, each with a fermata. This is followed by a quarter note G4 with an accent (>), then a quarter note A4, a quarter note B4, and a quarter note C5. The lyrics are: **Tum** (ts) (ts) (ts) (ts) **tum** te - ke **tu** te - ke. Below the staff, there are arrows: a right arrow under 'tum', and left arrows under 'tu'.

Bossa Nova



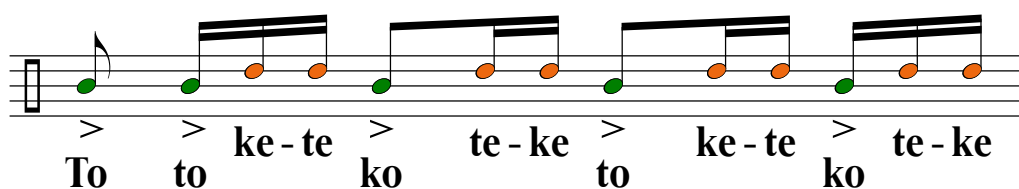
Musical notation for Bossa Nova. The staff shows a sequence of notes: a quarter note G4 with an accent (>) and a fermata, followed by a quarter note A4 with an accent (>), a quarter note B4 with an accent (>), a quarter note C5 with an accent (>), a quarter note B4 with an accent (>), a quarter note A4 with an accent (>), a quarter note G4 with an accent (>), a quarter note A4 with an accent (>), a quarter note B4 with an accent (>), and a quarter note C5 with an accent (>). The lyrics are: **Tum** **ku** te - ke **kum** te - ke **tum** te - ke **tu** te - ke. Below the staff, there are arrows: a left arrow under 'ku', a right arrow under 'kum', a right arrow under 'tum', and a left arrow under 'tu'.

Variante secuencial 1



Musical notation for Variante secuencial 1. The staff shows a sequence of notes: a quarter note G4 with an accent (>) and a fermata, followed by a quarter note A4 with an accent (>), a quarter note B4 with an accent (>), a quarter note C5 with an accent (>), a quarter note B4 with an accent (>), a quarter note A4 with an accent (>), a quarter note G4 with an accent (>), a quarter note A4 with an accent (>), a quarter note B4 with an accent (>), and a quarter note C5 with an accent (>). The lyrics are: **Ti** **ti** ke - te **ki** te - ke **ti** ke - te **ki** te - ke. Red 'x' marks are placed above the first four notes of the staff.

Variante secuencial 2



Musical notation for Variante secuencial 2. The staff shows a sequence of notes: a quarter note G4 with an accent (>), a quarter note A4 with an accent (>), a quarter note B4 with an accent (>), a quarter note C5 with an accent (>), a quarter note B4 with an accent (>), a quarter note A4 with an accent (>), a quarter note G4 with an accent (>), a quarter note A4 with an accent (>), a quarter note B4 with an accent (>), and a quarter note C5 with an accent (>). The lyrics are: **To** **to** ke - te **ko** te - ke **to** ke - te **ko** te - ke.