

TAKEDINORUM - VÍDEO 4.3 - Chatuku

Tipo de vídeo: RUTINA

Música: Acoustic Pop Backing Track 2 in Bb Major

Sahem Music Backing Tracks (publicado el 16 jul. 2017)

<https://www.youtube.com/watch?v=VvWL8ItAhZM>

Licencia Atribución de Creative Commons (reutilización permitida)

Sílabas takedinorum:

cha= palma genérica; tu (m) = pie derecho

ku (m) = pie izquierdo

Contenidos a 3 niveles de dificultad, a elegir por el espectador-alumno:

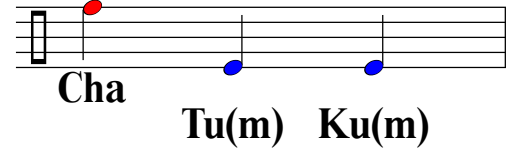
- Nivel 1: Usar "dum" como sílaba genérica sin preocuparse por el uso de derecha e izquierda.

- Nivel 2: Usar "tu(m), ku(m)", diferenciando derecha e izquierda.

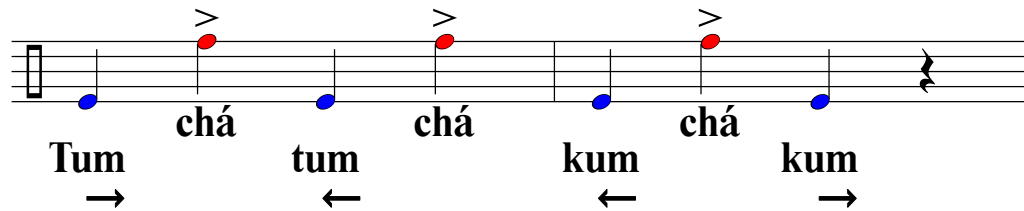
- Nivel 3: Hacer el movimiento de los pies: / → / ← / o /

Cada secuencia se muestra unos segundos (2compases) y se repite 7 veces.

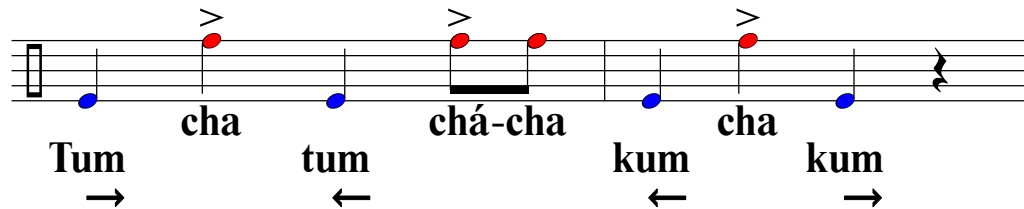
Figuras: negras, corcheas, negra con puntillo, síncopas.



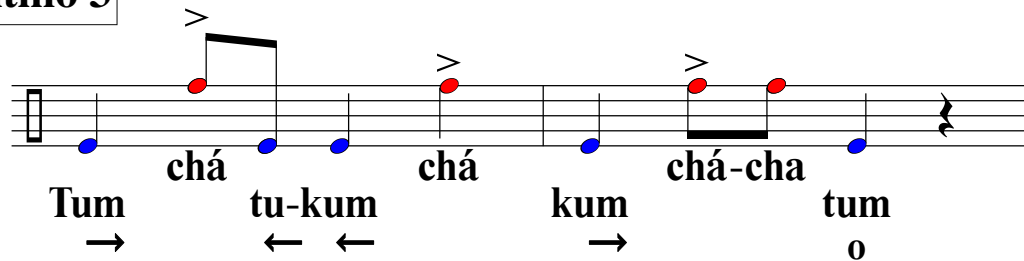
Ritmo 1



Ritmo 2



Ritmo 3



Ritmo 4

Tum → chá tu - kú ← ← kum → chá-cha tum 0

Ritmo 5

Tum → chá tu - kú ← ← ku → cha tum → chá tum ←

Ritmo 6

Tu → cha-chá tu - kú ← ← cha-chá ku-tu → → tum ←

Ritmo 7

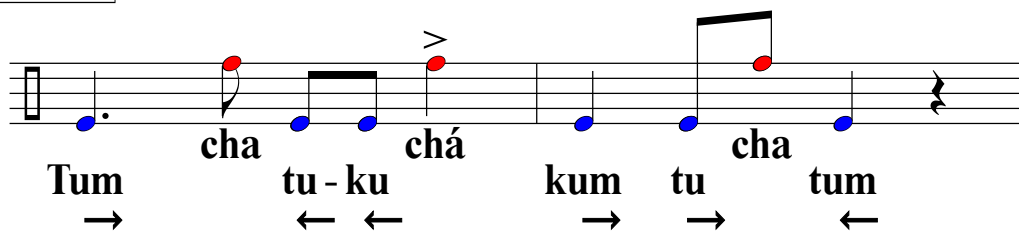
Tu → cha tu ← ku ← ku → tu → cha-chá tu-kum ← 0

Ritmo 8

Tu → cha-chá tu - kú ← ← ku - tú → → cha-chá tu ← chá ←

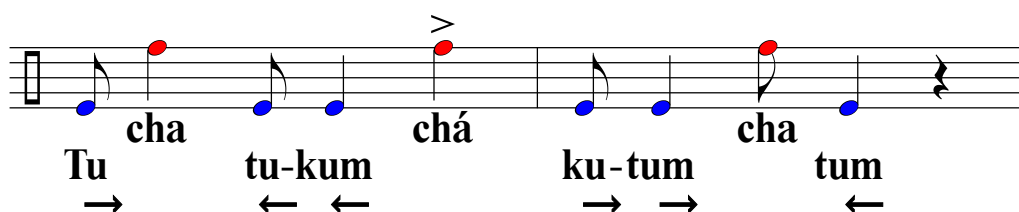


Ritmo 9



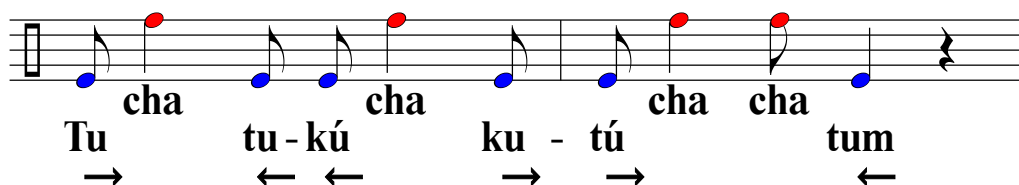
Musical notation for Ritmo 9 on a five-line staff. The notes are: a quarter note (blue), a quarter note (red), a quarter note (blue), a quarter note (blue), a quarter note (red with accent), a quarter note (blue), a quarter note (blue), a quarter note (red), a quarter note (blue), and a quarter note (blue). The lyrics are: Tum, cha, tu - ku, chá, kum, tu, cha, tum. Arrows indicate the direction of the syllables: Tum (→), cha (→), tu (←), ku (←), kum (→), tu (→), cha (→), tum (←).

Ritmo 10



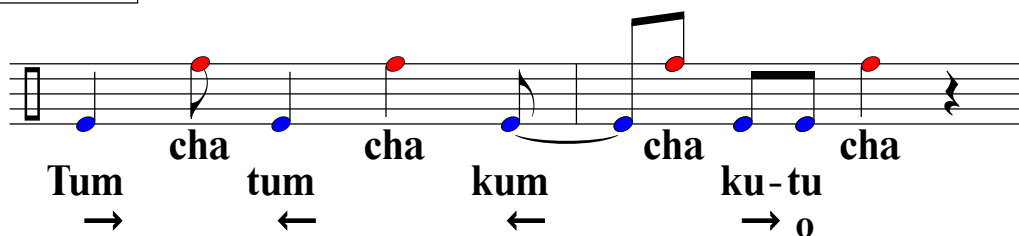
Musical notation for Ritmo 10 on a five-line staff. The notes are: a quarter note (blue), a quarter note (red), a quarter note (blue), a quarter note (blue), a quarter note (red with accent), a quarter note (blue), a quarter note (blue), a quarter note (red), a quarter note (blue), and a quarter note (blue). The lyrics are: Tu, cha, tu - kum, chá, ku - tum, cha, tum. Arrows indicate the direction of the syllables: Tu (→), cha (→), tu (←), kum (←), ku (→), tum (→), cha (→), tum (←).

Ritmo 11



Musical notation for Ritmo 11 on a five-line staff. The notes are: a quarter note (blue), a quarter note (red), a quarter note (blue), a quarter note (blue), a quarter note (red), a quarter note (blue), a quarter note (blue), a quarter note (red), a quarter note (blue), a quarter note (blue), and a quarter note (blue). The lyrics are: Tu, cha, tu - kú, cha, ku - tú, cha, cha, tum. Arrows indicate the direction of the syllables: Tu (→), cha (→), tu (←), kú (←), ku (→), tú (→), cha (→), cha (→), tum (←).

Ritmo 12



Musical notation for Ritmo 12 on a five-line staff. The notes are: a quarter note (blue), a quarter note (red), a quarter note (blue), a quarter note (red), a quarter note (blue), a quarter note (blue), a quarter note (red), a quarter note (blue), a quarter note (blue), a quarter note (red), a quarter note (blue), and a quarter note (blue). The lyrics are: Tum, cha, tum, cha, kum, cha, ku - tu, cha. Arrows indicate the direction of the syllables: Tum (→), cha (→), tum (←), cha (←), kum (←), cha (←), ku (→), tu (→), cha (→), o (→).